

Notice to Guests of NYK Hikawamaru

- ① There may be entry restrictions depending on the congestion inside the ship.
- ② To avoid congestion inside the ship, please limit entry to one group of up to 10 people.
For larger groups, please divide into smaller groups and maintain a distance while touring.
(Please note that the tour may take longer than usual.)
- ③ There may be changes to the ship's tour course.

- ④ If you experience shortness of breath, severe fatigue, or even mild symptoms such as coughing or sore throat, please refrain from entering.
- ⑤ Please observe cough etiquette.

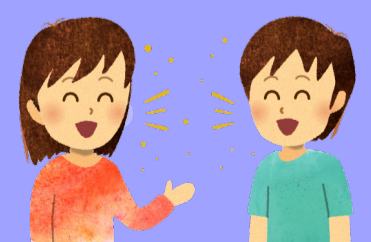


- ⑥ Disinfectant is available at the ship's boarding gate, stairs, and toilets.
Please disinfect your hands (wash your hands).



- ⑦ In case of congestion in the ship's corridors, security personnel may approach you.
Please maintain a distance from other visitors and proceed with the tour.
- ⑧ Handrails, doorknobs, exhibition items, display cases, and toilets along the ship's tour course are regularly disinfected.

- ⑨ Please refrain from speaking loudly in the indoor exhibition room.
- ⑩ Please follow the instructions of the facility.



We appreciate your understanding and cooperation.